

# Distinctive<sup>®</sup> Squalane Butter 45

INCI: Squalane (and) Caprylic/Capric Triglyceride (and) Behenyl Behenate (and) Tribehenin

June 4, 2015 rev.

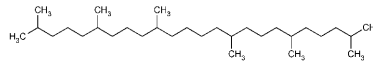
DC3821

## Natural Defense for Skin and Hair

**Squalane** is a highly emollient and conditioning substance providing relief from dry, irritated skin and scalp. Studies have shown that squalane helps boost cellular renewal and protects the skin by replenishing essential lipids to help revitalize the skin, and combat environmental aggressors and moisture loss. With a molecular structure most resembling sebum, squalane is readily absorbed by the skin, restoring skin softness and elasticity for a healthier, more youthful complexion.



**Distinctive<sup>®</sup> Squalane Butter 45** is a soft butter derived from 100% renewable, plant-based emollients. This colorless, odorless material melts at skin temperature to provide a soft, luxurious skin feel. It is an excellent alternative to lanolin, offering improved aesthetics and superior product stability. Use of Distinctive<sup>®</sup> Squalane Butter 45 in the oil phase helps protect skin against trans-epidermal water loss and environmental aggressors. It contains 45% stabilized plant squalane to mimic skin's natural lipid chemistry, offering superb bio-functionality, ideal for numerous personal care applications.



### BENEFITS

- |                                    |                                    |
|------------------------------------|------------------------------------|
| ◆ Emollient                        | ◆ Luxurious skin feel              |
| ◆ Restructuring                    | ◆ Enhanced gelling properties      |
| ◆ Barrier protection/ Reduces TEWL | ◆ Highly skin compliant            |
| ◆ Conditioning                     | ◆ Excellent substitute for lanolin |
| ◆ Moisturizing                     | ◆ Soothing                         |

### APPLICATIONS

- |                             |                   |
|-----------------------------|-------------------|
| ◆ Moisturizers              | ◆ Sensitive skin  |
| ◆ Cleansers                 | ◆ Anti-aging      |
| ◆ Hair and scalp treatments | ◆ Color cosmetics |
| ◆ Sun care                  | ◆ Baby products   |

### TYPICAL PROPERTIES

Appearance	Waxy solid
Color	White to off-white
Odor	Characteristic

### FORMULATION GUIDELINES

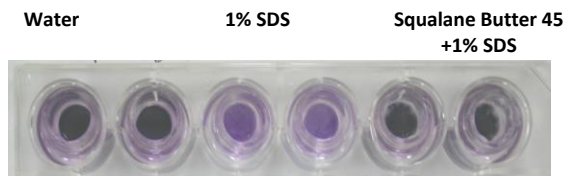
Recommended use level	1-8%
-----------------------	------

# Distinctive® Squalane Butter 45

INCI: Squalane (and) Caprylic/Capric Triglyceride (and) Behenyl Behenate (and) Tribehenin

## DEFENSE AGAINST ENVIRONMENTAL INSULTS

EpiDerm™ viability, assayed by MTT method



Distinctive® Squalane Butter 45 protected skin substitutes against SDS-induced damage. In the absence of Squalane Butter 45, SDS damaged cells, as demonstrated by the weak formazan generation in the middle 2 wells.

## QUANTIFICATION OF PROTECTIVE EFFECT

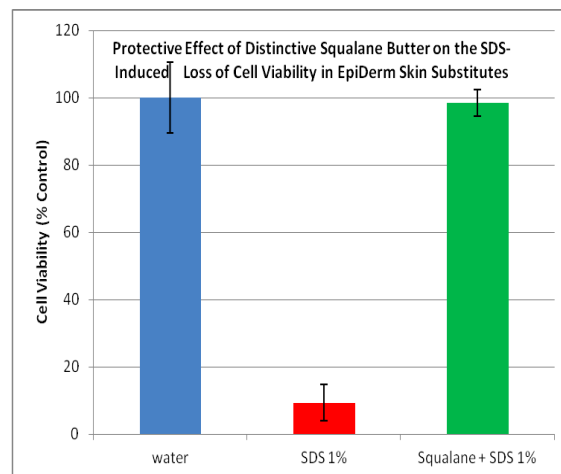
Viability of skin substitute

TEST MATERIAL	% WATER CONTROL	P VALUE
Water	100.0	1.000
SDS 1%	9.3	0.000
Squalane Butter 45 + SDS 1%	98.5	0.382

SDS causes nearly 90% keratinocyte viability loss as compared with the non-treated water control. In contrast, skin substitutes incubated with Distinctive® Squalane Butter 45 are nearly 99% resistant to the detergent-caused damage.

## PROTECTIVE EFFECT

EpiDerm™ viability determined under different conditions



Distinctive® Squalane Butter 45 protected EpiDerm™ viability

## MOISTURE INTENSE SERUM

Formula: RON 15-96-1

PHASE	INGREDIENT	% BY WEIGHT
A	Water	qs
A	Propanediol	3.00
A	Xanthan Gum	0.30
A	Glycerin	10.00
A	Distinctive® Emul-Lipid LB	4.00
B	Dimethicone	1.00
B	Cetyl Alcohol	0.50
B	Isododecane	4.00
B	Distinctive® Squalane Butter 45	5.00
B	Butyrospermum Parkii (Shea) Butter	2.00
B	C12-15 Alkyl Benzoate	2.00
C	Preservative	qs
		100.00

To the main vessel, add water and begin mixing with a propeller mixer. Premix Propanediol and Xanthan Gum and add to batch. Begin heating to 75-80°C. While heating, add Glycerin. At 75-80°C, add Distinctive® Emul-Lipid LB. Mix at 75-80°C for 20 minutes or until Distinctive® Emul-Lipid LB is fully hydrated.

In a side container, combine Phase B ingredients and heat to 75-80°C. Add Phase B to Phase A, mix 15 minutes, until uniform.

Begin cooling batch. At 40°C, add Phase C ingredients. Cool to room temperature.

**SELF ASSESSMENT CONSUMER STUDY:** A panel of 108 consumers completed a survey after using the Moisture Intense Serum and the findings strongly support that the Moisture Intense Serum formulated with *Distinctive® Squalane Butter 45* is a highly desirable product for gentleness, sensory, and hydration skin care benefits yielding a very high overall panelist satisfaction score of over 94%.

# Distinctive<sup>®</sup> Squalane Butter 45

INCI: Squalane (and) Caprylic/Capric Triglyceride (and) Behenyl Behenate (and) Tribehenin

## EXFOLIATING CLEANSER

Formula: RON16-29-4

PHASE	INGREDIENT	% BY WEIGHT	
A	Water	q.s.	To the main vessel, add water and begin mixing with a propeller mixer. Begin heating to 75-80°C. Premix Xanthan Gum and Glycerin. While heating, add Phase A ingredients, one at a time. Mix at 75-80°C for 20 minutes or until Distinctive <sup>®</sup> Emul-Lipid LB is fully hydrated.
A	Aloe Barbadensis Powder	0.10	
A	Xanthan Gum	0.20	
A	Glycerin	8.00	
A	<b>Distinctive<sup>®</sup> Emul-Lipid LB</b>	<b>5.00</b>	
B	<b>DC Odyssey Oil</b>	<b>1.50</b>	In a side container, combine Phase B ingredients and heat to 75-80°C. Add Phase B to Phase A, mix 15 minutes, until uniform. Begin cooling batch.
B	Cetearyl Alcohol	3.00	
B	<b>Distinctive<sup>®</sup> Squalane Butter 45</b>	<b>2.00</b>	At 35°C, add Phase C. Mix until uniform
C	Sodium Cocoyl Isethionate	2.00	At 30°C, add Phase D. Mix until uniform.
D	Sodium Polyacrylate	0.80	At 30°C, add Phase E. Mix until uniform. Homogenize, if necessary before adding Phase F ingredients.
E	Preservative	q.s.	Add Phase F ingredients. Mix until uniform.
F	Fragrance	q.s.	Add Phase G ingredients. Mix until uniform.
F	Scrubbing Beads/Exfoliant	q.s.	
		<u>100.00</u>	

## SHIMMERING CREAM

Formula: RON16-31-2

PHASE	INGREDIENT	% BY WEIGHT	
A	Water	q.s.	To the main vessel, add water and begin mixing with a propeller mixer. Begin heating to 75-80°C. While heating, add Phase A ingredients, one at a time. Mix at 75-80°C for 20 minutes or until Distinctive <sup>®</sup> Emul-Lipid LB is fully hydrated.
A	Glycerin	5.00	
A	<b>Distinctive<sup>®</sup> Emul-Lipid LB</b>	<b>5.00</b>	
B	<b>DC Odyssey Oil</b>	<b>3.00</b>	In a side container, combine Phase B ingredients and heat to 75-80°C. Add Phase B to Phase A, mix 15 minutes, until uniform. Begin cooling batch.
B	Helianthus Annuus (Sunflower) Seed Oil	2.00	
B	Coco-Caprylate/Caprates	2.00	
B	Cetearyl Alcohol	2.30	
B	<b>Distinctive<sup>®</sup> Squalane Butter 45</b>	<b>4.00</b>	
C	<b>Distinctive<sup>®</sup> Oat</b>	<b>3.00</b>	At 35°C, add Phase C ingredients. Mix until uniform.
C	Preservative	q.s.	At 30°C, add Phase D. Mix until uniform. Cool to Room Temperature
C	Fragrance	q.s.	
D	Sodium Polyacrylate	<u>0.45</u>	
		100.00	

# Distinctive® Squalane Butter 45

INCI: Squalane (and) Caprylic/Capric Triglyceride (and) Behenyl Behenate (and) Tribehenin

## TONER

Formula: RON16-35-2

PHASE	INGREDIENT	% BY WEIGHT	
A	Water	q.s.	To the main vessel, add water and begin mixing with a propeller mixer. Add the remainder of Phase A ingredients, one at time, mixing well between each addition.  Once homogenous, add Phase B. Homogenize if necessary.
A	Disodium EDTA	0.20	
A	Butylene Glycol	5.00	
A	Polyacrylate Crosspolymer-6	0.50	
A	<b>DC Instalift™ Goji</b>	<b>1.00</b>	
A	<b>Distinctive® Oat</b>	<b>2.00</b>	
A	<b>Distinctive® Squalane Butter 45</b>	<b>4.00</b>	
A	PEG-6 Caprylic/Capric Glycerides (and) Caprylic/ Capric Glycerides (and) Polyglyceryl-3 Oleate (and) Polyglyceryl-10 Mono/Dioleate	2.30	
B	Preservative	_____ q.s.	
		100.00	

## BOUNCY BLUSH

Formula: RON24-71-2

PHASE	INGREDIENT	% BY WEIGHT	
A	Water	q.s.	To the main vessel, add Water, Lecinol S-10, and Glycerin. Begin mixing with a propeller mixer and heat to 60°C. Mix until uniform. Add remainder of Phase A. Mix until uniform. Switch to the Silverson for high speed mixing. Use the square screen at 4500 rpm. Check dispersion on slides to confirm it is uniform. Switch back to propeller mixer. Heat to 73-75°C. Add Phase B Ingredients one at a time. Mix until uniform. Maintain temperature at 73-75°C. In a side container, combine Phase C ingredients and heat to 75°C. Add Phase C ingredients to main vessel and mix for 5 minutes, until uniform. Premix Phase D. Add Phase D on Silverson for high speed mixing. Mix on Silverson for 8-10 minutes. Use square screen at 6500 rpm. Switch back to propeller mixer. Begin cooling batch. At 60°C, add Phase E. Mix until uniform. At 45°C, add Phase F. Mix until uniform. Drop batch at 33-35°C.
A	Lecinol S-10	0.10	
A	Glycerin	5.00	
A	<b>RON Ti-12</b>	<b>7.80</b>	
A	Yellow Iron Oxide	0.34	
A	Red Iron Oxide	1.04	
A	Black Iron Oxide	0.14	
B	Disodium EDTA	0.05	
B	Sodium Hydroxide 20% Solution	0.45	
B	Carbopol Aqua SF-1 OS Polymer	3.00	
B	<b>Granpowder USQ</b>	<b>3.00</b>	
B	<b>Distinctive® Squalane Butter Mica P</b>	<b>2.00</b>	
C	<b>Distinctive® Emul-Lipid BA</b>	<b>3.50</b>	
C	<b>Distinctive® Emul-Lipid ST</b>	<b>1.00</b>	
C	Cetiol® OE	3.00	
C	<b>Distinctive® Squalane Butter 45</b>	<b>4.00</b>	
C	Essachem™ O	3.00	
C	<b>Distinctive® Blueberry 5P</b>	<b>2.00</b>	
C	Cetyl Alcohol	2.00	
D	Dow Corning® 556 Cosmetic Grade Fluid	5.00	
D	<b>Gransil EPSQ</b>	<b>1.00</b>	
E	Lincoserve™ CG-5	1.00	
F	Syntran® 5190CG	<u>3.00</u>	
		100.00	

# Distinctive<sup>®</sup> Squalane Butter 45

INCI: Squalane (and) Caprylic/Capric Triglyceride (and) Behenyl Behenate (and) Tribehenin

## LIPGLOSS

Formula: RON16-41

PHASE	INGREDIENT	% BY WEIGHT	
A	<b>Distinctive Squalane Butter 45</b>	<b>26.50</b>	
A	Ozokerite	0.80	
A	Bis-Diglyceryl Polyacyladipate-2	4.20	Add Phase A ingredients to main vessel and heat to 80-85°C.
A	Tocopheryl Acetate	1.00	
A	Polyglyceryl-6 Polyricinoleate	10.00	Mix until uniform.
A	Hydrogenated Polyisobutene	31.20	
A	Polybutene	24.00	Add Phase B ingredients, mix until uniform.
B	Flavor	qs	Cool to 70°C and pour.
B	Mica (and) Titanium Dioxide	<u>2.00</u>	
		100.00	

## CC CUSHION MAKEUP

Formula: RON24-75-2

PHASE	INGREDIENT	% BY WEIGHT	
A	Water	q.s.	
A	Glycerin	1.00	
A	Disodium EDTA	0.05	
A	Carbopol Aqua SF-1 OS Polymer	2.00	To the main vessel, add Water, Glycerin, and Disodium EDTA. Begin mixing with a propeller mixer and heat to 80°C. Mix until uniform.
B	<b>Distinctive<sup>®</sup> Moisture Soft 101</b>	<b>12.00</b>	Add remainder of Phase A. Mix until uniform.
C	Sodium Hydroxide 20% Solution	0.40	Add Phase B ingredient at 80°C. Mix for 30 minutes at 80°C.
D	Water	25.00	Add Phase C ingredient. Mix until uniform.
D	Lecinol S-10	0.30	For Phase D, in a side container, begin heating Water, Glycerin and Lecinol S-10 to 60°C. Mix until uniform with a propeller mixer.
D	Glycerin	3.00	Add in the RON Ti-12, Yellow, Red and Black Iron Oxides to the side container. Switch to the Silverson for high speed mixing. Use the square screen at 4500 rpm.
D	<b>RON Ti-12</b>	<b>12.00</b>	Check dispersion on slides to confirm it is uniform.
D	Yellow Iron Oxide	1.60	Add Phase D to the main vessel. Mix until uniform. Maintain temperature at 73-75°C.
D	Red Iron Oxide	0.52	
D	Black Iron Oxide	0.28	
E	<b>Granpowder USQ</b>	<b>3.00</b>	Add Phase E ingredients separately. Mix until uniform.
E	Sericite PHN	2.00	In a side container, combine Phase F ingredients and heat to 75°C.
F	Essachem <sup>™</sup> SOW	3.00	Add Phase F ingredients to main vessel and mix for 5 minutes.
F	<b>Distinctive<sup>®</sup> Squalane Butter 45</b>	<b>4.00</b>	Switch to the Silverson for high speed mixing for 5 minutes. Use square screen at 4500 rpm.
F	Essachem <sup>™</sup> O	4.00	
F	Ritastearic	0.30	Switch back to propeller mixer and begin cooling batch.
F	<b>Distinctive<sup>®</sup> Blueberry 5P</b>	<b>1.00</b>	At 60°C, add Phase G ingredient. Mix until uniform.
G	Lincoserve <sup>™</sup> CG-5	1.00	At 45°C, add Phase H ingredients separately in the order listed. Mix until uniform.
H	<b>Hydro-Matrix Rice PGA</b>	<b>2.00</b>	Cool batch to 30°C
H	Syntran <sup>®</sup> 5190CG	<u>3.00</u>	
		100.00	

# Distinctive® Squalane Butter 45

INCI: Squalane (and) Caprylic/Capric Triglyceride (and) Behenyl Behenate (and) Tribehenin

## FACE FINISHING MOISTURIZER

Formula: RON16-37

PHASE	INGREDIENT	% BY WEIGHT	
A	Water	q.s.	
A	Glycerin	4.00	
A	<b>Distinctive® Emul-Lipid LB</b>	<b>4.00</b>	To the main vessel, add water and begin mixing with a propeller mixer. Begin heating to 75-80°C. While heating, add Phase A ingredients, one at a time.
B	Cetyl Palmitate	1.50	
B	Coco-Caprylate/Caprata	2.00	Mix at 75-80°C for 20 minutes or until Distinctive® Emul-Lipid LB is fully hydrated.
B	Helianthus Annuus (Sunflower) Seed Oil	2.00	
B	Cetearyl Alcohol	2.00	In a side container, combine Phase B ingredients and heat to 75-80°C.
B	<b>Distinctive® Squalane Butter 45</b>	<b>2.00</b>	
C	<b>Distinctive® Oat</b>	<b>2.00</b>	Add Phase B to Phase A, mix 15 minutes, until uniform. Begin cooling batch.
C	<b>Gransil PSQ</b>	<b>2.00</b>	
C	Sodium Polyacrylate (and) Dimethicone (and) Cyclopentasiloxane (and) Trideceth-6 (and) PEG/PPG-18/18 Dimethicone	2.00	At 35°C, add Phase C ingredients, one at a time, mixing well between each addition. Mix until uniform.
D	<b>DC Instalift Goji</b>	<b>1.00</b>	
E	Preservative	qs	At 30°C, add Phase D. Mix until uniform. At 30°C, add Phase E. Mix until uniform.
F	Ammonium Acryloyldimethyltaurate/VP Copolymer	<u>0.45</u>	
		100.00	At 30°C, add Phase F. Mix until uniform. Homogenize if necessary.

## ANTI-AGING FOUNDATION & CONCEALER

Formula: RON24-75-1

PHASE	INGREDIENT	% BY WEIGHT	
A	Water	q.s.	
A	Lecinol S-10	0.30	To the main vessel, add Water, Lecinol S-10, and Glycerin. Begin mixing with a propeller mixer and heat to 60°C. Mix until uniform.
A	Glycerin	5.00	
A	<b>RON Ti-12</b>	<b>10.10</b>	Add remainder of Phase A. Mix until uniform.
A	Yellow Iron Oxide	1.35	Switch to the Silverson for high speed mixing. Use the square screen at 4500 rpm.
A	Red Iron Oxide	0.43	
A	Black Iron Oxide	0.18	Check dispersion on slides to confirm it is uniform.
B	Sodium EDTA	0.05	
B	Sodium Hydroxide 20% Solution	0.45	Switch back to propeller mixer. Heat to 73-75°C.
B	Carbopol Aqua SF-1 OS Polymer	3.00	
B	<b>Granpowder USQ</b>	<b>3.00</b>	Add Phase B Ingredients one at a time in the order listed. Mix until uniform. Maintain temperature at 73-75°C.
B	<b>Distinctive® Squalane Butter Mica P</b>	<b>2.00</b>	
C	<b>Distinctive® Emul-Lipid BA</b>	<b>3.50</b>	In a side container, combine Phase C ingredients and heat to 75°C.
C	<b>Distinctive® Emul-Lipid ST</b>	<b>1.00</b>	
C	Dow Corning® 556 Cosmetic Grade Fluid	3.00	Add Phase C ingredients to main vessel and mix for 5 minutes, until uniform.
C	<b>Distinctive® Squalane Butter 45</b>	<b>5.00</b>	
C	Essachem™ O	3.00	Switch to Silverson for high speed mixing for 5 minutes. Use square screen at 5000 rpm.
C	<b>Distinctive® Blueberry 5P</b>	<b>2.00</b>	
C	Cetyl Alcohol	2.00	Switch back to propeller mixer. Begin cooling batch.
D	Lincoserve™ CG-5	1.00	
E	Syntran® 5190CG	<u>3.00</u>	At 60°C, add Phase D. Mix until uniform. At 45°C, add Phase E. Mix until uniform.
		100.00	

# Distinctive® Squalane Butter 45

INCI: Squalane (and) Caprylic/Capric Triglyceride (and) Behenyl Behenate (and) Tribehenin

## SATIN CREAM FOUNDATION

Formula: RON24-75-3

PHASE	INGREDIENT	% BY WEIGHT		
A	Water	q.s.	To the main vessel, add Water, Glycerin, and Disodium EDTA. Begin mixing with a propeller mixer and heat to 80°C. Mix until uniform.	
A	Glycerin	1.00		
A	Disodium EDTA	0.05		
A	Carbopol Aqua SF-1 OS Polymer	1.00		
B	<b>Distinctive® Moisture Soft 101</b>	<b>12.00</b>		Add remainder of Phase A. Mix until uniform.
C	Sodium Hydroxide 20% Solution	0.30		Add Phase B ingredient at 80C. Mix for 30 minutes at 80°C.
D	Water	20.00		Add Phase C ingredient. Mix until uniform.
D	Lecinol S-10	0.10		For Phase D, in a side container, begin heating Water, Glycerin and Lecinol S-10 to 60°C. Mix until uniform with a propeller mixer.
D	Glycerin	3.00		Add in the RON Ti-12, Yellow, Red and Black Iron Oxides to the side container. Switch to the Silverson for high speed mixing. Use the square screen at 4500 rpm.
D	<b>RON Ti-12</b>	<b>6.00</b>		Check dispersion on slides to confirm it is uniform.
D	Yellow Iron Oxide	0.80	Add Phase D to the main vessel. Mix until uniform. Maintain temperature at 73-75°C.	
D	Red Iron Oxide	0.26		
D	Black Iron Oxide	0.11		
E	<b>Granpowder USQ</b>	<b>6.00</b>	Add Phase E ingredient. Mix until uniform.	
F	Essachem™ SOW	3.00	In a side container, combine Phase F ingredients and heat to 75°C.	
F	<b>Distinctive® Squalane Butter 45</b>	<b>4.00</b>		
F	Essachem™ O	4.00	Add Phase F ingredients to main vessel and mix for 3 minutes.	
F	Ritastearic	0.30	Add Phase G ingredients separately and mix until uniform.	
G	Sericite PHN	2.00	Immediately switch to the Silverson for high speed mixing for 5 minutes. Use square screen at 4500 rpm.	
G	Lincoserve™ CG-5	<u>1.00</u>		
		100.00	Drop batch at 55-60°C.	

## CC BOUNCY MAKEUP

Formula: RON24-75-4

PHASE	INGREDIENT	% BY WEIGHT	
A	Water	q.s.	To the main vessel, add Water, Lecinol S-10, and Glycerin. Begin mixing with a propeller mixer and heat to 60°C. Mix until uniform.
A	Lecinol S-10	0.10	
A	Glycerin	5.00	
A	<b>RON Ti-12</b>	<b>7.80</b>	
A	Yellow Iron Oxide	1.04	
A	Red Iron Oxide	0.34	
A	Black Iron Oxide	0.14	
B	Disodium EDTA	0.05	
B	Sodium Hydroxide 20% Solution	0.50	
B	Carbopol Aqua SF-1 OS Polymer	3.00	
B	<b>Granpowder USQ</b>	<b>3.00</b>	Check dispersion on slides to confirm it is uniform. Switch back to propeller mixer. Heat to 73-75°C.
B	<b>Distinctive® Squalane Butter Mica P</b>	<b>4.00</b>	
C	<b>Distinctive® Emul-Lipid BA</b>	<b>3.50</b>	In a side container, combine Phase C ingredients and heat to 75-77°C.
C	<b>Distinctive® Emul-Lipid ST</b>	<b>1.00</b>	
C	Cetiol® OE	3.00	Add Phase C ingredients to main vessel and mix for 5 minutes, until uniform.
C	<b>Distinctive® Squalane Butter 45</b>	<b>4.00</b>	
C	Essachem™ O	3.00	Switch to Silverson for high speed mixing for 5 minutes. Use square screen at 5000 rpm.
C	<b>Distinctive® Blueberry 5P</b>	<b>2.00</b>	
C	Cetyl Alcohol	2.00	Switch back to propeller mixer. Begin cooling batch. At 60°C, add Phase D. Mix until uniform.
D	Lincoserve™ CG-5	1.00	
E	Hydro-Matrix Rice PGA	2.00	At 45°C, add Phase E ingredients separately. Mix until uniform. Cool batch to 30°C.
E	Syntran® 5190CG	<u>5.00</u>	
		100.00	

# Distinctive<sup>®</sup> Squalane Butter 45

INCI: Squalane (and) Caprylic/Capric Triglyceride (and) Behenyl Behenate (and) Tribehenin

## MELTING CREAM BLUSH

Formula: RON24-71-1

PHASE	INGREDIENT	% BY WEIGHT	
A	Water	q.s.	
A	Glycerin	1.00	To the main vessel, add Water, Glycerin, and Disodium EDTA. Begin mixing with a propeller mixer and heat to 80°C.
A	Disodium EDTA	0.05	
A	Carbopol Aqua SF-1 OS Polymer	1.00	
B	<b>Distinctive<sup>®</sup> Moisture Soft 101</b>	<b>12.00</b>	
C	Sodium Hydroxide 20% Solution	0.30	Mix until uniform. Add remainder of Phase A. Mix until uniform. Add Phase B ingredient at 80°C. Mix for 30 minutes at 80°C.
D	Water	20.00	Add Phase C ingredient. Mix until uniform. For Phase D, in a side container, begin heating Water, Glycerin and Lecinol S-10 to 60°C.
D	Lecinol S-10	0.10	
D	Glycerin	3.00	Mix until uniform with a propeller mixer.
D	<b>RON Ti-12</b>	<b>7.80</b>	Add in the RON Ti-12, Yellow, Red and Black Iron Oxides to the side container. Switch to the Silverson for high speed mixing. Use the square screen at 4500 rpm.
D	Yellow Iron Oxide	0.34	
D	Red Iron Oxide	1.04	
D	Black Iron Oxide	0.14	
E	<b>Granpowder USQ</b>	<b>6.00</b>	Check dispersion on slides to confirm it is uniform. Add Phase D to the main vessel. Mix until uniform.
F	Essachem <sup>™</sup> SOW	3.00	Add Phase E to the main vessel. Mix until uniform. Maintain temperature at 73-75°C.
F	<b>Distinctive<sup>®</sup> Squalane Butter 45</b>	<b>4.00</b>	
F	Essachem <sup>™</sup> O	4.00	In a side container, combine Phase F ingredients and heat to 75°C. Add Phase F ingredients to main vessel and mix for 3 minutes, until uniform.
F	Ritastearic	0.30	
G	Sericite PHN	2.00	Add Phase G ingredients separately. Mix until uniform. Immediately switch to the Silverson for high speed mixing for 5 minutes.
G	Lincoserve <sup>™</sup> CG-5	<u>1.00</u>	
		100.00	Use square screen at 4500 rpm. If necessary to remove air, slowly prop mix batch and drop at 50-55°C.

### REFERENCES

T.Haußa , S.Dante, N.Dencher, T.Haines, Squalane is in the midplane of the lipid bilayer: implications for its function as a proton permeability barrier. Biochimica et Biophysica Acta 1556 (2002) 149– 154.

The information contained in this technical bulletin is presented in good faith, and to the best of our knowledge believed to be true and accurate. No representations or warranties, expressed or implied is made or intended. Information is supplied upon the condition that the persons receiving same will make their own determination as to its suitability for their purposes prior to use. No recommendation should be construed as an inducement to use a material in infringement of patents or applicable government regulations. In no event will Resources of Nature be responsible or liable for any loss of profits, lost goodwill, direct, special, indirect, incidental, or consequential damages of any nature whatsoever.